

MSBOA State Solo and Ensemble Festival

Proficiency Information and Rules

A. Entrance Requirements

1. All senior high school soloists (10th, 11th, 12th grade) must perform in the Proficiency Examination Section. Having passed Proficiency I in the previous year, the entrant must enter Proficiency II, etc. If an entrant fails to pass Proficiency I the previous year, he/she may repeat Proficiency I.
2. The following categories are open at each grade:
10th grade -- Proficiency I, may not enter II or III
11th grade -- Proficiency I or II, may not enter III
12th grade -- Proficiency I, II, or III

B. Rules and Information

1. Proficiency Exams:

- a. Wind and String Instrument Proficiency examinations consist of three sections:
 1. Scales 25 points
 2. Sight Reading 25 points
 3. Prepared Solo 50 points
- b. Piano Proficiencies consist of four sections:
 1. Scales and Arpeggios 15 points
 2. JS Bach Invention/Fugue 15 points
 3. Sight Reading 20 points
 4. Prepared Solo 50 points
- c. Snare Drum Proficiencies consist of three sections:
 1. Stick Control 25 points
 2. Sight Reading 25 points
 3. Prepared Solo 50 points
- d. Melody Percussion Proficiencies consist of three sections:
 1. Scales and/or Four Mallet Chord Progressions 25 points
 2. Sight Reading 25 points
 3. Prepared Solo 50 points
- e. Timpani Proficiencies consist of three sections:
 1. Sight Reading 25 points
 2. Prepared Etude 25 points (Proficiency III Students must prepare both Etudes I and II)
 3. Prepared Solo 50 points
- f. Mixed percussion soloists must play proficiency requirements 1 and 2 on either snare, mallets, or tympani.

2. Scales:

(Note: these appear on the following pages) The student must be prepared to play the scales listed for their instrument in the rhythm and tempo indicated. Scales must be memorized. Articulations for winds will be all slurred or all tongued. Strings use bowings on the String Proficiency page. Melody percussion only roll the last note.

3. Piano Invention or Fugue: (Piano Solo events only)

The piano invention or fugue does not have to be memorized. The adjudicator's copy of the Bach Selection will be provided by the State Association. Piano entries play the scale and arpeggio as a unit and are rated on them as one item.

4. Prepared Solo

The student may prepare a solo of any length, but not less than two minutes or no rating will be given. The judge shall have the right to start and stop the student during the solo as he/she desires. The judge must be furnished an ORIGINAL (*), numbered copy of the solo, other than the one used by the student, for adjudication. Remember, no ORIGINAL (*)
numbered score, no rating.

The solo which the student performs in the Proficiency Examination need not be the same solo used for qualification in the District Festival.

5. Sight-Reading

- a. Sight-reading is to be prepared by a designated committee appointed by the President of Michigan School Band and Orchestra Association.
- b. Sight-reading shall be graded according to the Proficiency level.
- c. Sixty seconds will be allowed for study of proficiency sight-reading. Following this, the student shall begin to play.
- d. Proficiency sight-reading will be waived for all blind or visually impaired entrants as determined by their director. Full credit will be given.

6. Percussionists

- a. The entry fees for Percussion Proficiencies (and Piano) are higher because the examinations are longer.
- b. No equipment will be provided for the Percussion Proficiency Examinations.
- c. Stick Control proficiency rudiments are not cumulative. Rudiments must be performed slow-fast-slow at a consistent volume.

7. Miscellaneous

- a. Each examination is allowed a total of 12 minutes: 5 minutes for solo and 5 minutes for scales and sight reading (and Inventions and Fugues), and 2 minutes for adjudicator comments. Piano and Percussion proficiencies are allowed a total of 16 minutes. The break-down of time is left to the discretion of the adjudicator, however, they must hear five scales or five stick control rudiments and the sight reading in addition to the solo. Generally, the solo is played first, to allow the accompanist to leave. However, adjudicators will give the students their choice of the playing order of the proficiency items or sections.
- b. A total of 85 points is required for successfully passing any proficiency examination provided all sections have been attempted.
- c. A Proficiency Certificate which can be completed by the music director will be issued with each rating sheet bearing a passing score.

SOLO and ENSEMBLE PROFICIENCY SCALES

WIND and MELODY PERCUSSION INSTRUMENTS

These scales are not listed in concert pitch.

Required Scale Rhythm:



Chromatic: Even Rhythm – Such as even eighth notes or triplets

Minimum Tempo: Proficiency I- quarter note = 80; Proficiency II- quarter note = 100; Proficiency III- quarter note = 120

Articulation: All slurred or all tongued (adjudicator's choice)

Note: Proficiency examinations are cumulative, i.e., Proficiency II includes all scales listed in both I and II and Proficiency III includes scales listed for I, II, and III. **All Scales must be memorized.** Students are allowed 60 seconds to look over music for the sight reading part of the examination. Upper case (B) indicates major scales, lower case (b) indicates melodic minor, and "chr." indicates chromatic. The number after a scale indicates the number of octaves.

SCALES

	Proficiency I	Proficiency II	Proficiency III
Piccolo	Bb2, Eb2, F2, C1 g2, c1, d2, a2, Eb chr. 2	Ab2, G2, D2 f2, bb2, e2, b2, G chr. 2	A2, E2, B2, Gb2 f#2, g#2, eb2, C chr. 2
Flute	Bb2, Eb2, F2, C2 g2, c2, d2, a2, Eb chr. 2	Ab2, Db2, G2, D2 f2, bb2, e2, b2, G chr. 2	A2, E2, B2, Gb2 f#2, c#2, g#2, eb2, C chr. 3
Oboe/English Horn	Bb1, F1, C2, G1 g1, d1, a1, e1, C chr. 2	Eb1, Ab1, D2, A1 c2, f1, b2, f#1, D chr. 2	Db2, Gb1, E2, B2 bb1, eb2, c#2, g#1, E chr. 2
Bb Clarinet (Eb Soprano)	C2, F3, Bb2, G3 a2, d2, g3, e3, E chr. 3	Eb2, Ab2, D2, A2 c2, f3, b2, f#3, F chr. 3,	Db2, Gb3, E3, B2 bb2, eb2, c#2, g#2, G chr. 3
Alto and Bass (Contra.) Clar	C2, F2, Bb2, G2 a2, d2, g2, e2, E chr. 2	Eb1, Ab2, D1, A2 c2, f2, b2, f#2, F chr. 2	Db2, Gb2, E3, B2 bb2, eb1, c#1, g#2, G chr. 2
Bassoon	Bb2, F2, C2, G2 g2, d2, a2, e2, Bb chr. 2	Eb2, Ab2, D2, A2 c2, f2, b2, f#2, A chr. 2	Db2, Gb2, E2, B2 bb2, eb2, c#2, g#2, Bb chr. 3
Saxophone (Sop, Alto, Tenor, Bari)	G1, C2, F2, Bb2 e2, a1, d2, g1, C chr. 2	D2, A1, Eb2, Ab1 b2, f#1, c2, f2, Bb chr. 2	E2, B2, Db2, F#2 c#2, g#1, bb2, d#2, F chr. 2
Cornet Trumpet	C1, F1, Bb2, G2 a2, d1, g2, e1, G chr. 2	Eb1, Ab2, D1, A2 c2, f1, b2, f#2, Bb chr. 2	E1, B2, Gb2, Db2 c#2, g#2, eb1, bb2, C chr. 2
French Horn	F2, Bb1, Eb1, C1 d1, g2, c1, a1, F chr. 2	Ab2, Db1, G2, D1 f2, bb1, e2, b1, G chr. 2	A2, E2, B2, Gb2 f#2, c#1, g#2, eb2, C chr. 3
Trombone	Bb1, Eb1, Ab2, F2 g2, c1, f2, d1, F chr. 2	Db1, Gb2, C1, G2 bb2, eb1, e2, a2, Ab chr. 2	D1, A2, E2, B2 b2, f#2, c#1, g#2, Bb chr. 2
Baritone Bass Clef	Bb1, Eb1, Ab2, F2 g2, c1, f2, d1, F chr. 2	Db1, Gb2, C1, G2 bb2, eb1, a2, e2, Ab chr. 2	D1, A2, E2, B2 b2, f#2, c#1, g#2, Bb chr. 2
Baritone Treble Clef	C1, F1, Bb2, G2 a2, d1, g2, e1, G chr. 2	Eb1, Ab2, D1, A2 c2, f1, b2, f#2, Bb chr. 2	E1, B2, Gb2, Db2 c#2, G#2, eb1, bb2, C chr. 2
Tuba	Bb1, Eb1, Ab2, F2 g2, c1, f2, d1, F chr. 2	Db1, Gb2, C1, G2 bb2, eb1, a2, e2, Ab chr. 2	D1, A2, E2, B2 b2, f#2, c#1, g#2, Bb chr. 2
Melody Percussion	C2, F2, Bb2, Eb2 a2, d2, g2, c2, Bb chr. 2	Ab2, Db2, G2, D2 f2, bb2, e2, b2, G chr. 2 Chord pro. C & F I, IV, V, I	A2, E2, B2, F#2 f#2, c#2, g#2, d#2, C chr. 3 Chord pro. G & Bb I, IV, V, I

NOTE: Sight Reading contains some alternate clefs.

There are Horn – bass clef, Bassoon – tenor clef, Trombone - alto/tenor clef

Solo and Ensemble Proficiency Scales/Sight-Reading for String Instruments

General Requirements:

- All scales must be memorized
- Students must perform scales with not less than the minimum tempo listed below
 - **Violin & Viola: quarter note = 80**
 - **Cello: quarter note = 70**
 - **Bass: quarter note = 60**
- Student may perform scales in either pattern A or B (see both examples below)



- Students may perform scales either as separate bowings or any combination of slurs.

Required Scales for Each Proficiency Level/Instrument:

- In the scale chart below,
 - Upper Case letters designates Major Scales
 - Lower Case letters designates Minor Scales (**melodic form**)
 - “Chr.” designates Chromatic Scale
- The number after the scale indicated the number of octaves required to perform.

Instrument	Proficiency I	Proficiency II	Proficiency III
Violin	G3, Ab3, A3, Bb3, e2, f2, f#2, g3, G Chr. 2	B3, C3, Db3, D3, g#3, a3, bb3, b3, D Chr. 2	Eb3, E3, F3, F#3, c3, c#3, d3, d#3, G Chr. 3
Viola	C3, Db3, D3, Eb3, a2, bb2, b2, c3, C Chr. 2	E3, F3, F#3, G3, c#3, d3, d#3, e3, G Chr. 2	Ab3, A3, Bb3, B3, f3, f#3, g3, g#3, C Chr. 3
Cello	C3, D3, F3, G3, a2, b2, d3, e3, C Chr. 2	Eb3, Ab3, A3, Bb3, c3, f3, f#3, g3, G Chr. 2	E3, B3, Db3, F#3, c#3, g#3, bb3, d#3, C Chr. 3
String Bass	D1, Eb1, E2, F2 b1, c1, c#1, d1, A Chr. 1	G2, Ab2, A2, Bb2, e2, f2, f#2, g2, D Chr. 1	B2, C2, D2, Gb2, g#2, a2, b2, eb2, E Chr. 2

- Proficiency examinations are cumulative.
 - Proficiency I includes only those scales listed in Proficiency I
 - Proficiency II includes all scales listed in both Proficiency I and II
 - Proficiency III includes all scales listed in both Proficiency I, II and III

Chromatic Scales:

- **Even Rhythm – such as even eighth notes or triplets.**
- Start on the lowest available open string. Suggested fingering patterns are:
 - Violin and Viola – 0 1-1 2-2 3 4 0 etc.
 - Cello – 0 1 2 3 1 2 3 0 etc.
 - String Bass – 0 1-1 2-4 0 etc.

Sight-Reading:

- You are allowed 60 seconds to study and look over the sight-reading music before performing it. **NOTE:** Sight-Reading contains some alternate clefs **for viola, cello, and bass**.

Piano Proficiency

Proficiency One

1. All major scales and arpeggios, hands together, parallel motion, 4 octaves, ascending and descending all eighth notes at a minimum speed of MM=80. See sample scales below. * (15 points)
2. Prepared Solo (50 points)
3. Any JS Bach Two Part Invention (15 points)
4. Sight Reading (20 points)

Proficiency Two

1. All major scales and arpeggios, all white key minor scales (melodic form), and white key minor arpeggios played hands together hands together, parallel motion, 4 octaves, ascending and descending all eighth notes at a minimum speed of MM=100. See sample scales below. * (15 points)
2. Prepared Solo (50 points)
3. Any JS Bach Three Part Invention (15 points)
4. Sight Reading (20 points)

Proficiency Three

1. All major scales and arpeggios, all minor scales (melodic form), and white key minor arpeggios played hands together hands together, parallel motion, 4 octaves, ascending and descending all eighth notes at a minimum speed of MM=120. See sample scales below. * (15 points)
2. Prepared Solo (50 points)
3. Any Fugue from *The Well Tempered Clavichord* by JS Bach (15 points)
4. Sight Reading (20 points)

* Suggested fingerings of scales and arpeggios may be found in texts such as the *Schmitt Preparatory Exercises Op. 16, the Complete Hanon*. Published by Schirmer, etc.

EXAMPLE OF MAJOR SCALE AND ARPEGGIO

C Major



EXAMPLE OF MELODIC MINOR SCALE AND ARPEGGIO

a minor



HARP PROFICIENCY SCALES AND INFORMATION

Proficiency One

1. a. All major scales*, hands **together**, minimum of 1½ octaves, ascending and descending, all eighth notes, at a minimum speed of MM ♩ = 80.
- b. All major arpeggios*, hand over hand, 4 octaves, ascending and descending, all eighth notes, at a minimum speed of MM ♩ = 80. See sample scales and arpeggios. (25 points)
2. Prepared Solo (50 points)
3. Sight Reading (25 points)

Proficiency Two

1. a. All major & minor (harmonic form) scales*, hands **together**, minimum of 1½ octaves, ascending and descending, all eighth notes, at a minimum speed of MM ♩ = 100.
- b. All major, minor and dominant seventh arpeggios*, hand over hand, 4 octaves, ascending and descending, all eighth notes, at a minimum speed of MM ♩ = 100. See sample scales and arpeggios. (25 points)
2. Prepared Solo (50 points)
3. Sight Reading (25 points)

Proficiency Three

1. a. All major & minor (harmonic form) scales*, hands **together**, minimum of 1½ octaves, ascending and descending, all eighth notes, at a minimum speed of MM ♩ = 120.
- b. All major, minor and dominant seventh arpeggios*, in any inversion, hand over hand, 4 octaves, ascending and descending, all eighth notes, at a minimum speed of MM ♩ = 120. See sample scales and arpeggios.
- c. Glissando passage - see sample (25 points)
- d. Harmonic exercise - see sample. (25 points)
2. Prepared Solo (50 points)
3. Sight Reading (25 points)

* For troubadour harps, only C and sharp keys are required. Top right hand grouping for arpeggios may be altered to reflect the range of the instrument.

Harp Proficiency Patterns

Scales (hands separately) - Minimum 1-1/2 octaves

Right Hand

Left Hand

Harp Proficiency III Only

1. Glissando

♩ = 60 (Minimum)

Harp

2. Harmonics (Harmonics written where played)

♩ = 60 (minimum)

Percussion Proficiency Information

Snare Drum Proficiency I, II, & III

Section 1 - Stick Control	25 points
Section 2 - Sight Reading	25 points
Section 3 - Prepared Solo	50 points

Melody Percussion Proficiency I, II, & III

Section 1 -	25 points
Proficiency I - Five Scales	
Proficiency II - 5 Scales and/or 4 mallet C & F Chord Progressions	
Proficiency III - 5 Scales and/or 4 mallet G & Bb Chord Progressions	
Section 2 - Sight Reading	25 points
Section 3 - Prepared Solo	50 points

Timpani Proficiency I, II, & III

Section 1 - Prepared Etude	25 points
Proficiency I - Etude I	
Proficiency II - Etude II	
Proficiency III - The student must prepare both Etude I & II. The Adjudicator will select which Etude, I or II, is to be performed.	
Section 2 - Sight Reading	25 points
Section 3 - Prepared Solo	50 points

NOTE: A student performing a "Multiple Percussion" solo must perform sections 1 and 2 on either Snare Drum, Melody Percussion or Timpani.

Snare Drum Stick Control Rudiments

**Rudiments are not cumulative unless they are restated under each Proficiency level.
All rudiments must be performed slow-fast-slow at a consistent dynamic.**

Proficiency I:

Long Double Stroke Roll



Long Multiple Bounce Roll



Flams (Hand to hand)



Ruffs (Hand to hand)



Five Stroke Roll



Proficiency II:

Long Double Stroke Roll - Same as Proficiency I

Long Multiple Bounce Roll - Same as Proficiency I

Single Stroke Roll



Flams and Ruffs in combination patterns:

Flamacue



Flam Paradiddle



Single Drag Tap



Single Ratamacue



Diddle patterns:

Paradiddle



Double Paradiddle



Proficiency III:

Long Double Stroke Roll - Same as Proficiency I

Long Multiple Bounce Roll - Same as Proficiency I

Single Stroke Roll - Same as Proficiency II

Double Stroke Rolls:

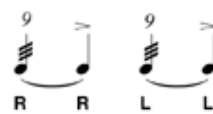
6 Stroke Roll



7 Stroke Roll



9 Stroke Roll



13 Stroke Roll



Flam combination patterns:

Flam Tap



Flam Accents



Double Pataflafla



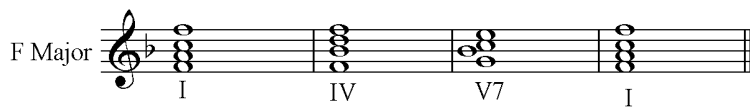
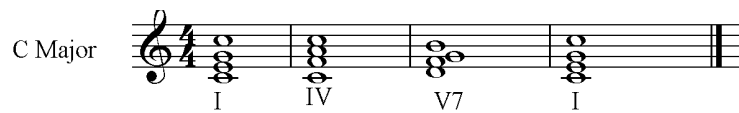
Swiss Triplets



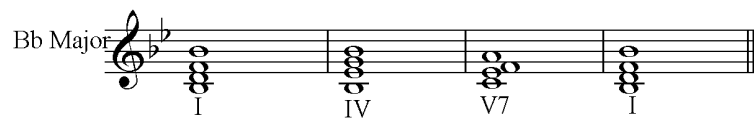
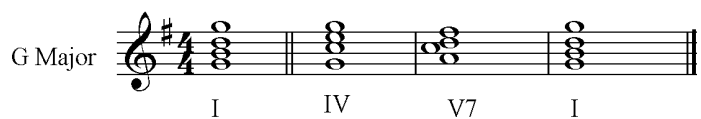
Chord Progressions for Melody Percussion Instruments

Proficiency I - Scales only

Proficiency II: C Major & F Major Chord Progressions



Proficiency III: G Major & Bb Major Chord Progressions



Timpani Etude I

$\text{♩} = 112$

1 G - C 2 3 3 3 4 5 6 7 8

f *p*

9 10 11 12 13 14 15 16 17 18

mf *fp*

19 20 21 22 23 24 25 26 27 28

fp *pp*

29 30 8 39 40 41 42 43 44 45

Change C to D *mf*

46 47 48 49 50 8 59 60 61

mf Change G to A *f* *p* *mf*

62 63 64 65

f

66 67 68 69 70

mp

71 72 73 74 75 76

Timpani Etude II is required for Proficiency II and the student must prepare both Etude I and II for Proficiency III

Timpani Etude II

Musical score for the left hand of a piano piece, measures 1-33. The tempo is marked as quarter note = 80. The key signature is one flat (B-flat major or D minor). The time signature is 4/4. The score is written on a single staff with a bass clef.

Measures 1-33: The piece begins with a piano (*p*) dynamic. Measures 1-6 feature a series of chords and eighth notes, with a fermata over measure 6. Measures 7-10 continue with eighth notes and a fermata over measure 10. Measures 11-13 show a change in dynamics to *f* (forte) and a fermata over measure 13. Measures 14-17 feature a change to *fp* (fortissimo piano) and a fermata over measure 17. Measures 18-20 show a change to *mf* (mezzo-forte) and a fermata over measure 20. Measures 21-23 continue with eighth notes and a fermata over measure 23. Measures 24-27 show a change to *p* (piano) and a fermata over measure 27. Measures 28-30 feature a change to *f* (forte) and a fermata over measure 30. Measures 31-33 continue with eighth notes and a fermata over measure 33.

Dynamics: *p*, *f*, *fp*, *mf*.

Pedal: Pedal 29, Pedal 23.

Hand: LH (Left Hand).